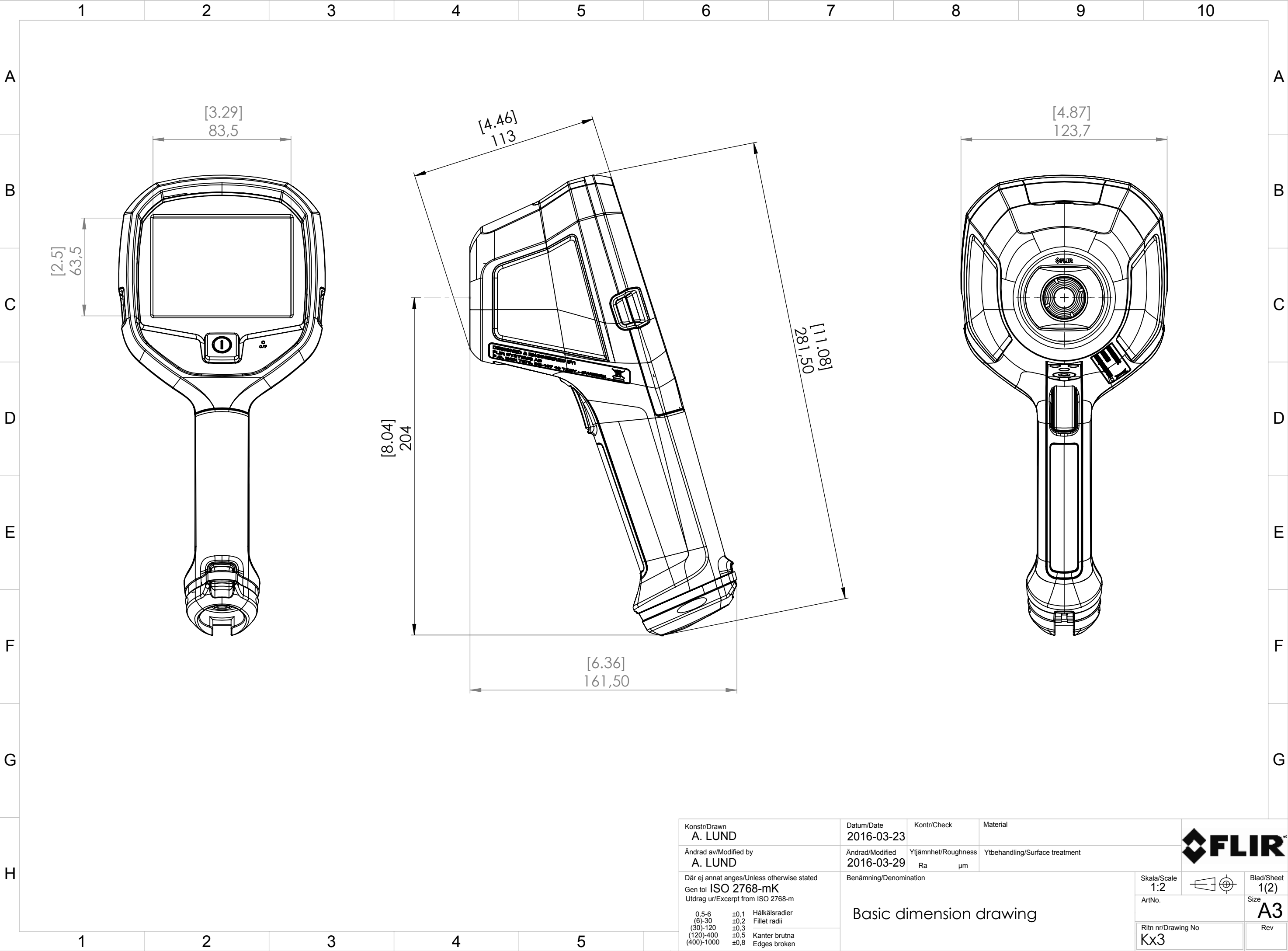

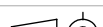


This document must not be communicated or
copied completely or in part, without our permission.
Any infringement will lead to legal proceedings.
FLIR SYSTEMS AB

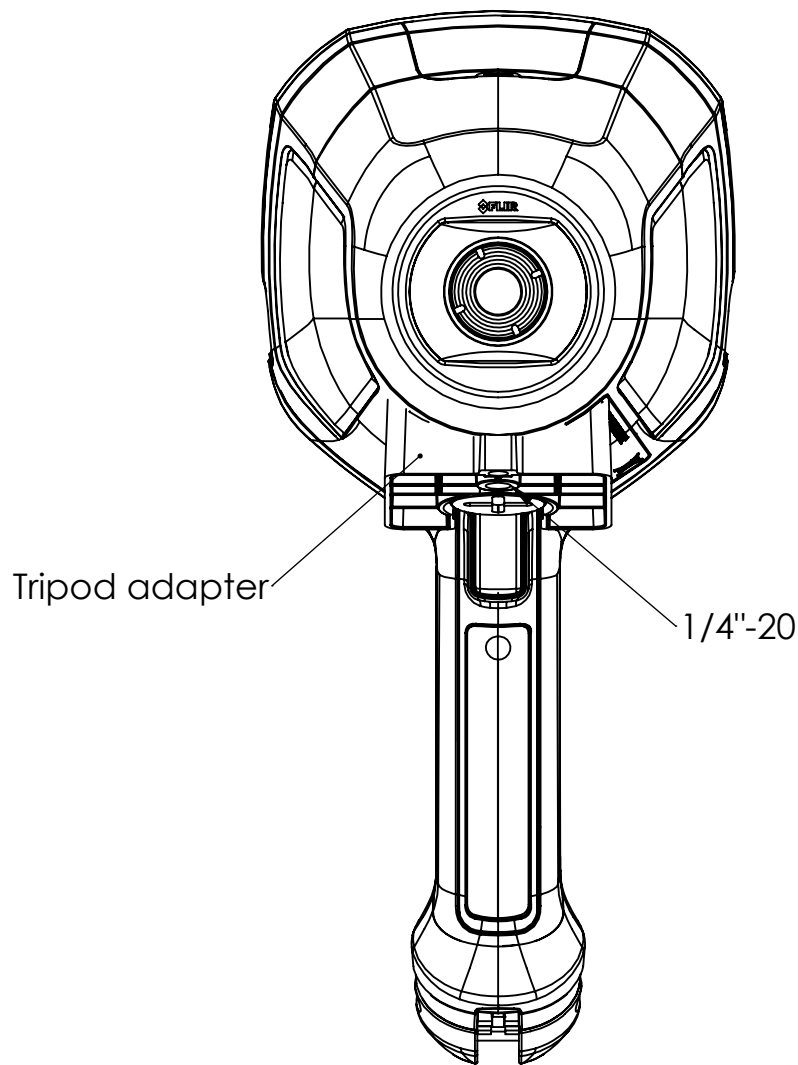
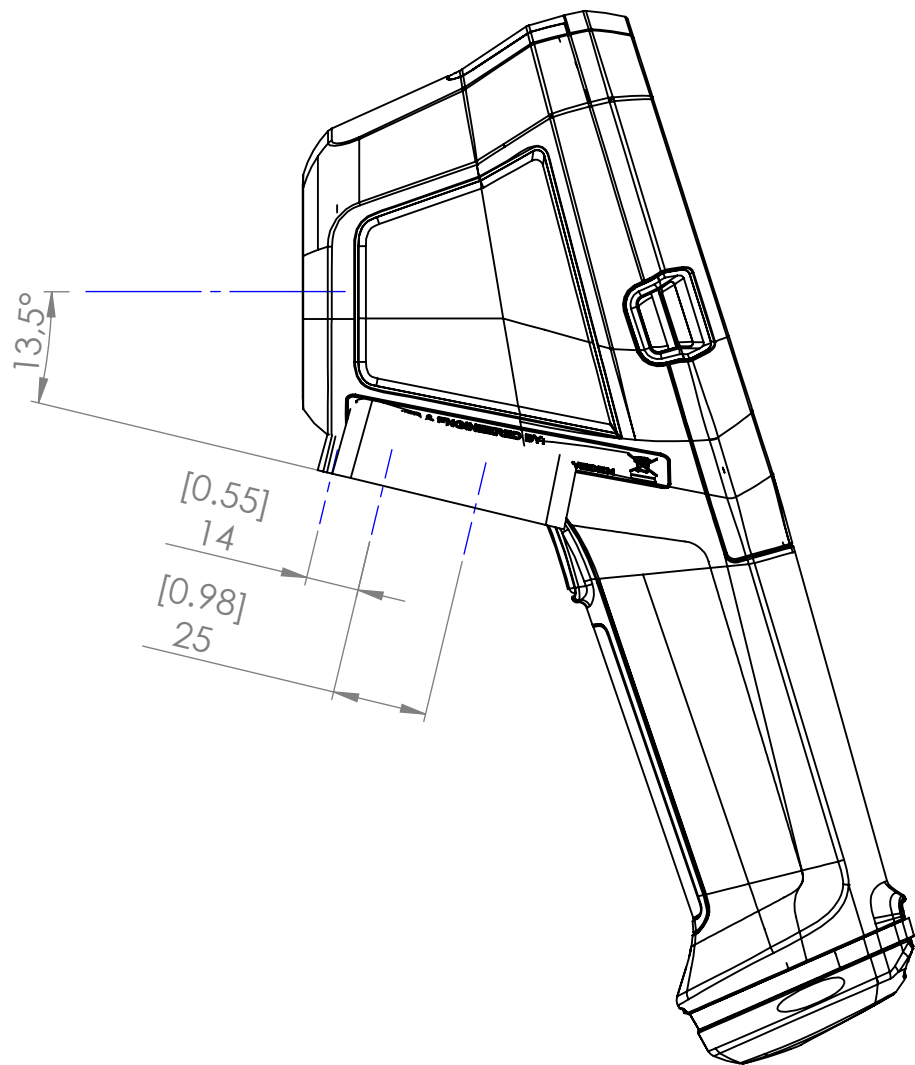
Denna handling får ej delges annan, kopieras i
sin helhet eller delar utan vårt medgivande.
Överträdelse härav beivras med stöd av gällande lag.
FLIR SYSTEMS AB



Konstr/Drawn A. LUND	Datum/Date 2016-03-23	Kontr/Check	Material			
Ändrad av/Modified by A. LUND	Ändrad/Modified 2016-03-29	Ytjämnhet/Roughness Ra μm	Ytbehandling/Surface treatment			
Där ej annat anges/Unless otherwise stated Gen tol ISO 2768-mK Utdrag ur/Excerpt from ISO 2768-m	Benämning/Denomination <div>Basic dimension drawing</div>			Skala/Scale 1:2		Blad/Sheet 1(2)
0.5-6 ±0.1 Hålkälsradier (6)-30 ±0.2 Fillet radii (30)-120 ±0.3 (120)-400 ±0.5 Kanter brutna (400)-1000 ±0.8 Edges broken				ArtNo.		Size A3
				Ritn nr/Drawing No Kx3		Rev

This document must not be communicated or copied completely or in part without our permission. Any infringement will lead to legal proceedings. FLIR SYSTEMS AB

Denna handling får ej delges annan, kopieras i sin helhet eller delar utan vårt medgivande. Överträdelse härav beivras med stöd av gällande lag. FLIR SYSTEMS AB



Konstr/Drawn A. LUND		Datum/Date 2016-03-23	Kontr/Check	Material -	
Ändrad av/Modified by A. LUND		Ändrad/Modified 2016-03-29	Ytjämnhet/Roughness Ra μm	Ytbehandling/Surface treatment	
Där ej annat anges/Unless otherwise stated Gen tol ISO 2768-mK Utdrag ur/Excerpt from ISO 2768-m		Benämning/Denomination Basic dimension drawing			Skala/Scale 1:2
0,5-6 ±0,1 Hålkålsradier (6)-30 ±0,2 Fillet radii (30)-120 ±0,3 (120)-400 ±0,5 Kanter brutna (400)-1000 ±0,8 Edges broken					Blad/Sheet 2(2) Size A3
					Ritn nr/Drawing No Kx3 Rev